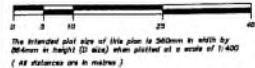


**SUBDIVISION PLAN OF 1) PART OF PARCEL A (PLAN B1566) OF LOT 4 PLAN 426
EXCEPT PLAN 39686 2) LOTS 1 AND 2 PLAN KAP58054 3) PART OF LOT B
PLAN KAP73698 AND 4) LOT 1 PLAN EPP63257 ALL OF SECTION 27
TOWNSHIP 26 OSOYOOS DIVISION YALE DISTRICT**

PLAN EPP137707

PURSUANT TO SECTION 57 OF THE LAND TITLE ACT

BC05 82E.083



LEGEND

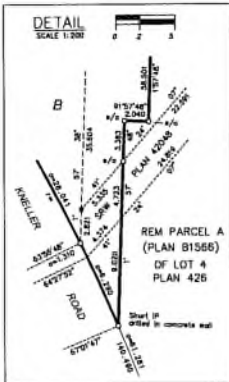
- Describe Standard Iron post (Type 3) found
- Describe Standard Iron post (Type 3) placed
- ⊙ Describe Central Monument found
- ⊕ Describe existing house
- ⊗ Describe survey or realty symbol
- ⊘ Describe witness

Note: This plan shows one or more witness posts which are not on the true corners.

Integrated Survey Area No. 4, City of Vancouver, MA90 (CRS) 4.0.B.C.1

Old bearings are derived from QCS observations and are referred to the central meridian of UTM Zone 11. The UTM coordinates and estimated absolute accuracy obtained are derived from Real-time QCS survey ties to geodetic control monuments 1301854, 8042354 and 2042365.

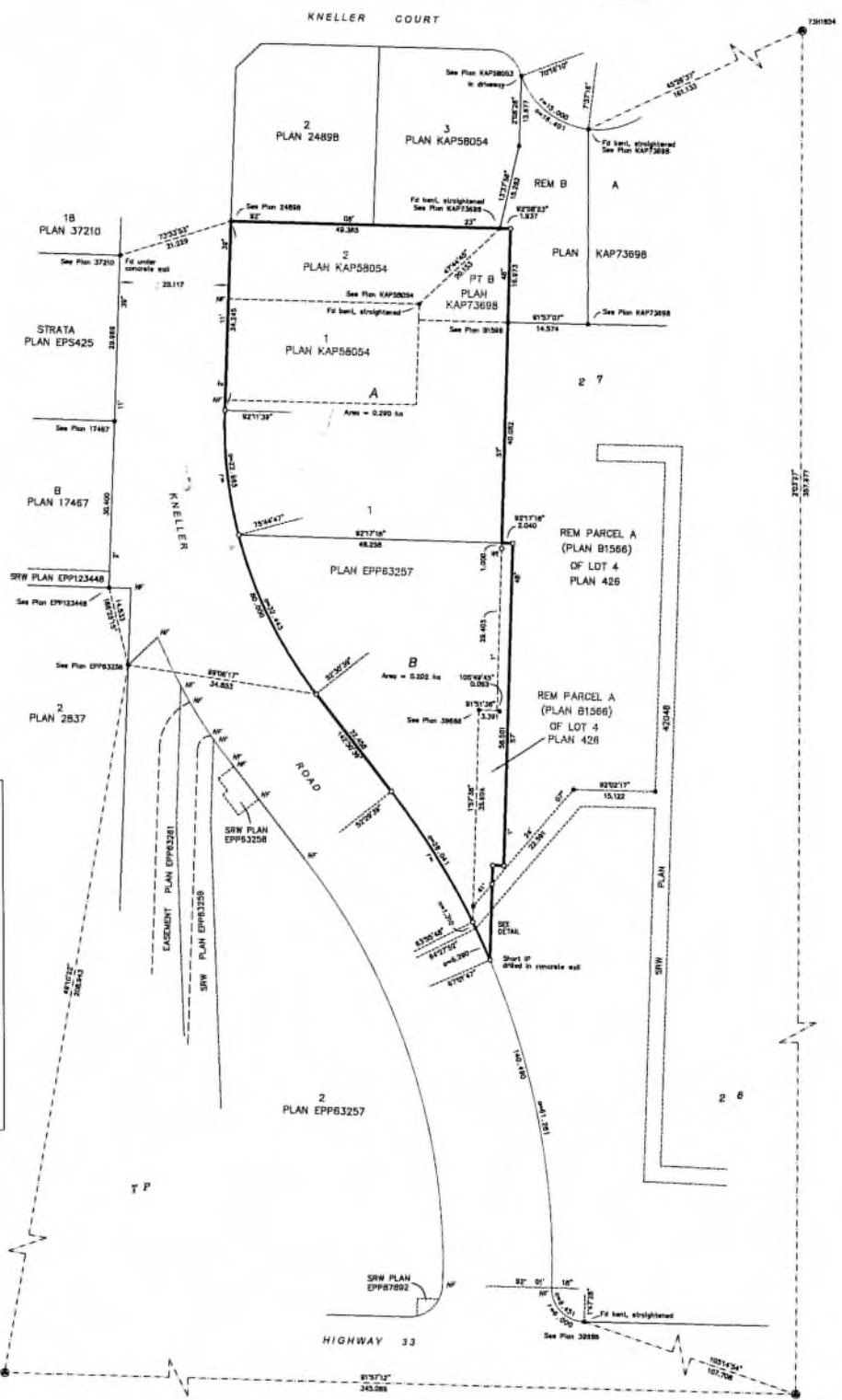
This plan shows horizontal ground-level distances unless otherwise specified. To convert grid distances, multiply ground-level distances by the combined factor of 0.999907 which has been derived from geodetic control monument 8042354.



8042365
UTM Zone 11 coordinates
Datum: NAD83(CRS) 4.0.B.C.1
UTM northing: 3254970.329
UTM easting: 220712.348
Estimated Absolute Accuracy
Assumed: 0.10m.

8042354
UTM Zone 11 coordinates
Datum: NAD83(CRS) 4.0.B.C.1
UTM northing: 3254965.488
UTM easting: 220703.182
Estimated Absolute Accuracy
Assumed: 0.10m.

RUNNALLS DENBY
British Columbia Land Surveyors
2584 Lawrence Avenue Phone: (250)783-7322
Victoria, B.C. Email: rdb@runnallsdenby.com
V1T 4L2



This plan lies within the Regional District of Central Okanagan.
This plan lies within the Jurisdiction of the Approving Officer for the City of Vancouver.
The field survey represented by this plan was completed on the 25th day of April, 2024.
Robert T. Woodcock, BCLS #73